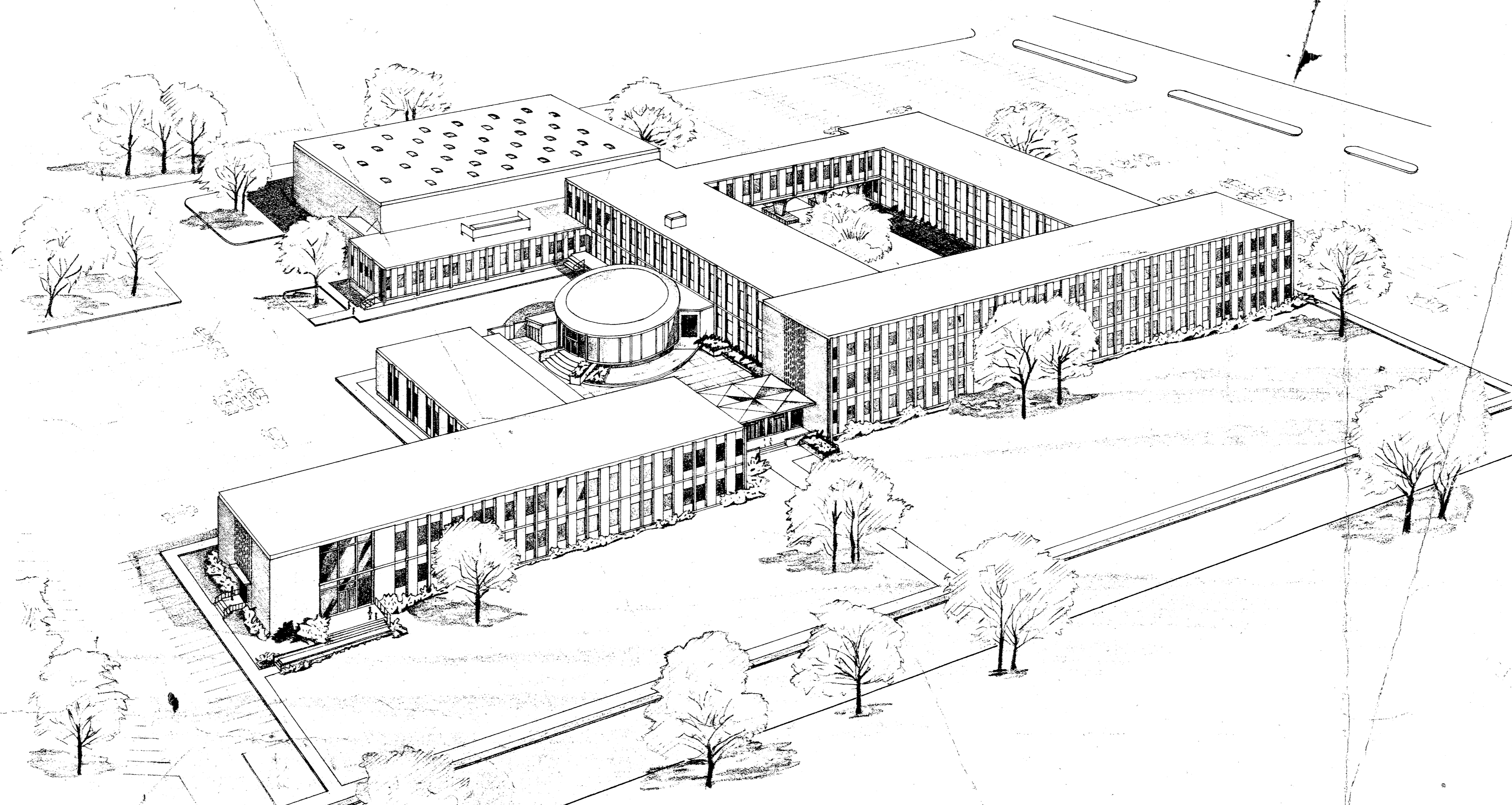


JOINT ADMINISTRATION BUILDING

MEMPHIS, TENNESSEE
FOR

BOARD OF EDUCATION
OF THE
MEMPHIS CITY SCHOOLS

MEMPHIS PARK COMMISSION
CITY OF MEMPHIS



WALTER P. ARMSTRONG, JR.
President
JNO T. SHEA
Vice President
JULIAN B. BONDURANT
Mrs LAWRENCE COE
Mrs ARTHUR N. SEESSEL, JR.

E. C. STIMBERT
Superintendent

HARRY C. PIEROTTI
Chairman
E. C. BARWICK
Vice Chairman
JOHN R. GORMAN
Commissioner
WALKER L. WELLFORD, JR.
Commissioner
Mrs W. JETER EASON
Commissioner

H. S. LEWIS
Director of Parks

S. S. KENWORTHY & ASSOC.
STRUCTURAL ENGINEERS

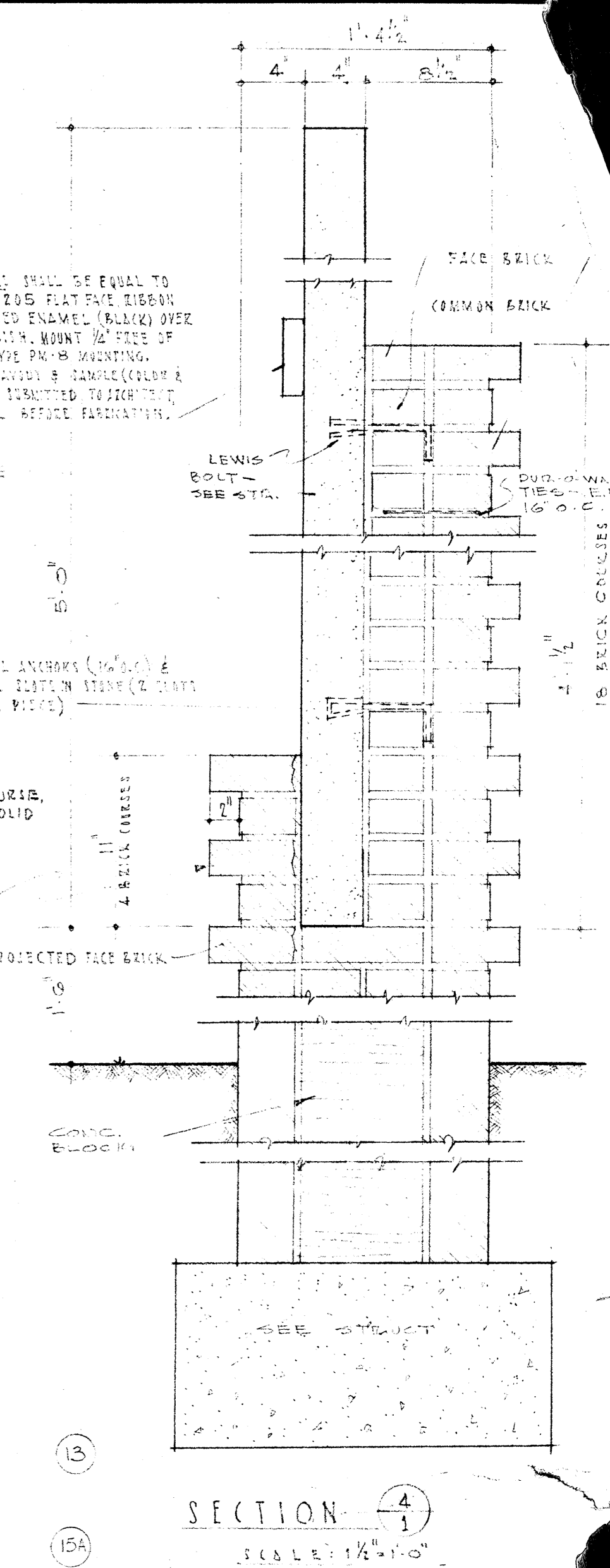
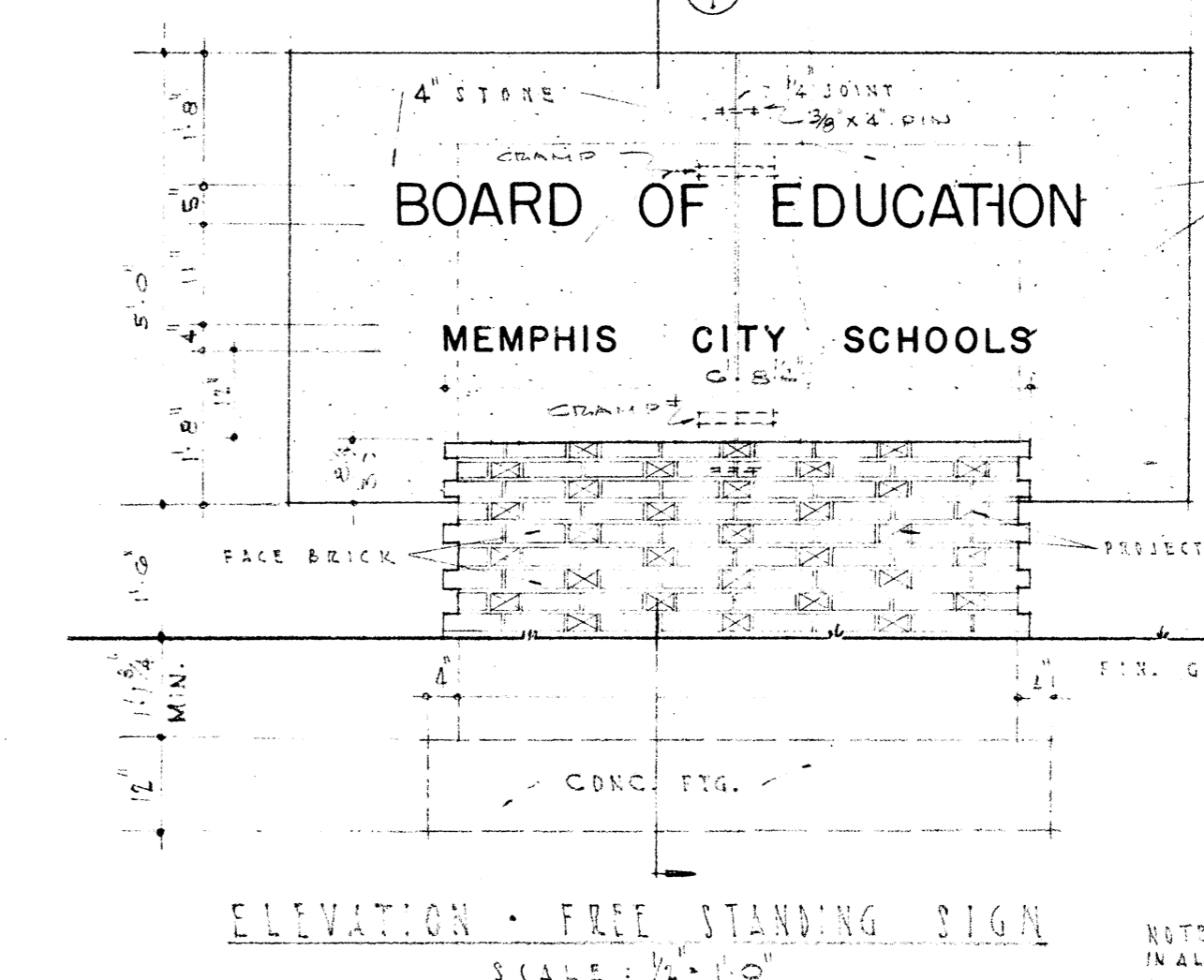
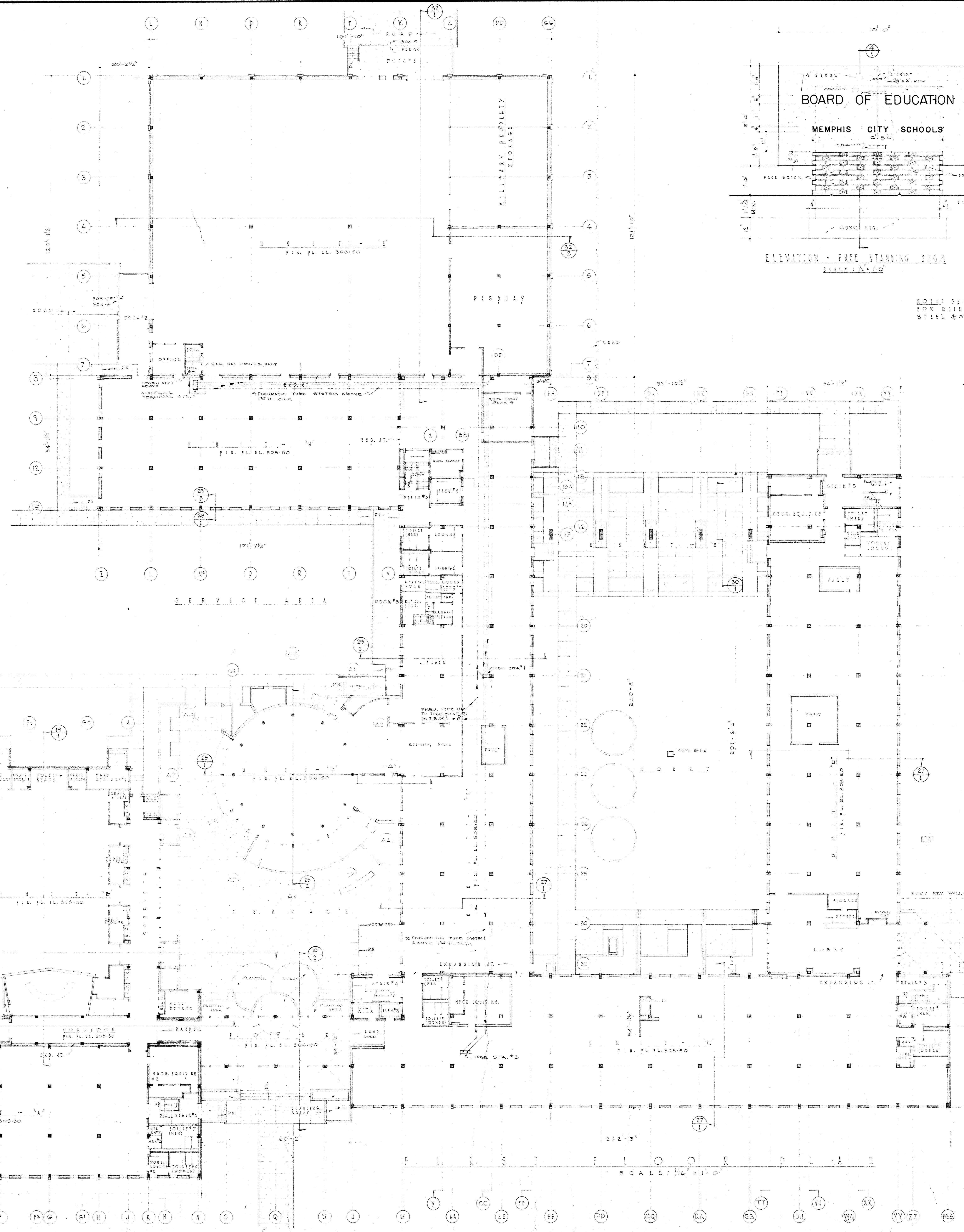
CLARENCE H. FISHER
DEAN E. HILL AND ASSOC.
ROBERT H. McCARTY
ASSOCIATED ARCHITECTS

910 STERICK BUILDING MEMPHIS, TENNESSEE

FLINN AND HUMPHREY
MECHANICAL ENGINEERS

SCHEDULE OF DRAWINGS

ARCHITECTURAL			STRUCTURAL			MECHANICAL			
SHEET NO.	DESCRIPTION OF SHEET	SHEET NO.	DESCRIPTION OF SHEET	SHEET NO.	DESCRIPTION OF SHEET	SHEET NO.	DESCRIPTION OF SHEET	SHEET NO.	DESCRIPTION OF SHEET
1	SITE PLAN	29	UNIT "F" SECTION	S-1	UNITS "A" & "B" FOUND., 1ST FL., AND COL. SCHED.	M-1	PLB., ELEC., HTG., & AIR COND. PLOT PLAN	M-29	ELEC. UNIT "D"-LIGHTING
2	SITE IMPROVEMENT DETAILS	30	UNIT "E" SECTION	S-2	2nd FLOOR UNIT "A" AND LOW ROOF UNIT "B"	M-2	PLUMBING	M-30	ELEC. UNIT "D"-POWER
3-A	SITE IMPROVEMENT DETAILS	31	UNIT "F" & "I" SECT., & TYPICAL ACOUSTICAL TILE CLG.	S-3	ROOF PLAN, UNITS "A" & "B"	M-3	PLB.	M-31	ELEC. UNITS "E" & "H"-LIGHTING
4	FIRST FLOOR PLAN 1/16" SCALE	32	UNIT "I" SECTIONS & DETAILS	S-4	UNIT "C" FOUND., 1st & 2nd FL. FRAMING PLANS	M-4	PLB.	M-32	ELEC. UNITS "F" & "H"-POWER
5	SECOND FLOOR PLAN 1/16" SCALE	33	UNIT "A" TOILET ROOM PLANS & DETAILS	S-5	3rd FL. & ROOF FRAMING PLANS, COL. SCHEDULE	M-5	PLB.	M-33	ELEC. UNIT "F"-LIGHTING
6	THIRD FLOOR PLAN & ROOF PLAN 1/16" SCALE	34	UNIT "C" TOILET ROOM PLANS & DETAILS	S-6	UNIT "D" FOUND., 1st & 2nd FL. FRAMING PLANS	M-6	PLB.	M-34	ELEC. UNIT "F"-POWER
7	ELEVATIONS 1/16" SCALE	35	UNIT "D" TOILET ROOM PLANS & DETAILS	S-7	ROOF FRAMING PLANS AND COL. SCHEDULE	M-7	PLB.	M-35	ELEC. UNITS "D" & "E" FOUND. PLAN
8	UNIT "A" FLOOR PLANS 1/8" SCALE	36	UNIT "F" TOILET ROOM PLANS & DETAILS	S-8	UNIT "E" FOUND., 2nd FL. & ROOF FR. PLANS, COL. SCHED.	M-8	PLB.	M-36	ELEC. UNITS "D" & "E" FLOOR PLANS
9	UNIT "B" FLOOR PLANS & ELEVATIONS 1/4" SCALE	37	UNIT "B" TYPICAL WALL SECTIONS	S-9	UNIT "F" FOUND., BASEMENT, & 1st FL. FRAMING PLANS	M-9	PLB.	M-37	ELEC. UNIT "F" FOUNDATION PLAN
9-A	UNIT "B" STAGE DETAILS	38	UNIT "C" STAIR PLANS & DETAILS	S-10	2nd FLOOR & ROOF FRAMING PLANS	M-10	PLB.	M-38	ELEC. UNIT "F" FLOOR PLANS
10	FOYER FLOOR PLAN 1/4" SCALE	39	UNIT "D" STAIR PLANS & DETAILS	S-11	UNIT "G" FOUND., 1st FL., & ROOF FR. PLANS, COL. SCHED.	M-11	PLB.	M-39	ELEC. UNIT "F" BOILER ROOM PLAN
11	UNIT "C" FLOOR PLANS 1/8" SCALE	40	EXPANSION JOINT PLANS & DETAILS	S-12	UNIT "H" FOUND., 1st FL., & ROOF FR. PLANS, COL. SCHED.	M-12	PLB.	M-40	ELEC. UNIT "G" & KITCHEN
12	UNIT "D" FLOOR PLANS 1/8" SCALE	41	EXPANSION JOINT PLANS & DETAILS	S-13	UNIT "I" FOUND., 1st FL., FRAMING PLANS, COL. SCHED.	M-13	PLB.	M-41	ELEC. UNITS "H" & "I"
13	UNIT "E" & "H" FLOOR PLANS 1/8" SCALE	42	EXPANSION JOINT PLANS & DETAILS	S-14	ROOF PLAN AND SECTIONS	M-14	PLB., H & A/C	M-42	ELEC. PIPE TRENCHES & DETAILS
14	UNIT "F" FLOOR PLANS 1/8" SCALE	43	LOBBY No. 2 PLAN & DETAILS	S-15	TWO WAY PAN LAYOUT AND STAIR SECTIONS	M-15	H & A/C	M-43	ELEC. UNIT "A" & FOYER
15	UNIT "G" FLOOR PLAN 1/4" SCALE	44	MISC. DETAILS	S-16	TYP. SPANDREL AND COL. DETAILS AND STAIR SECTIONS	M-16	H & A/C	M-44	ELEC. UNIT "B"
16	UNIT "I" FLOOR PLAN 1/8" SCALE	45	PLANS AND ELEVATIONS OF ALTERNATES 3, 4, & 5	S-17	TYP. PILE DET., & PIPE TRENCH PLANS, GENERAL NOTES	M-17	H & A/C	M-45	ELEC. UNIT "C"
17	ROOM FINISH SCHEDULE	46	UNIT "A" MOVEABLE PARTITION SCHEMATIC PLAN	S-18	JOIST SCHEDULE	M-18	H & A/C	M-46	ELEC. UNIT "D"
18	UNIT "A" ELEVATIONS 1/8" SCALE	47	UNIT "C" " " " " " "	S-19	JOIST SCHED. CONTINUED AND GRADE BEAM SCHED.	M-19	H & A/C	M-47	ELEC. UNIT "F" FLOOR PLANS
19	UNIT "B" SECTIONS 1/4" SCALE	48	UNIT "D" " " " " " "	S-20	BEAM SCHEDULE	M-20	H & A/C	M-48	ELEC. UNIT "F" BOILER ROOM PLAN
20	UNIT "C" ELEVATIONS 1/8" SCALE	49	UNITS "E" & "H" " " " " " "			M-21	H & A/C	M-49	ELEC. UNIT "G"
21	UNIT "D" ELEVATIONS 1/8" SCALE	50	UNIT "F" " " " " " "			M-22	H & A/C	M-50	ELEC. UNITS "E" & "H"
22	UNIT "E", "H", & "I" ELEVATIONS 1/8" SCALE					M-23	H & A/C	M-51	ELEC. UNIT "I"
23	UNIT "F" ELEVATIONS 1/8" SCALE					M-24	H & A/C	M-52	ELEC. DETAILS & SCHEDULES
24	UNIT "G" ELEVATIONS 1/8" SCALE					M-25	H & A/C	M-53	ELEC. DETAILS & SCHEDULES
25	UNIT "G" SECTIONS					M-26	ELECTRICAL	M-54	ELEC. UNIT "A" & FOYER-LIGHTING
25-A	UNIT "G" SECTIONS & DETAILS					M-27	ELEC.	M-55	ELEC. UNIT "A" & FOYER-POWER
26	DOOR SCHEDULE & DOOR DETAILS					M-28	ELEC.	M-56	ELEC. UNIT "B"-LIGHT & POWER
27	TYPICAL SECTION & BAY ELEVATION					M-29	ELEC.	M-57	ELEC. UNIT "C"-LIGHTING
28	TYPICAL WALL SECTION & WINDOW SCHEDULE					M-30	ELEC.	M-58	ELEC. UNIT "C"-POWER



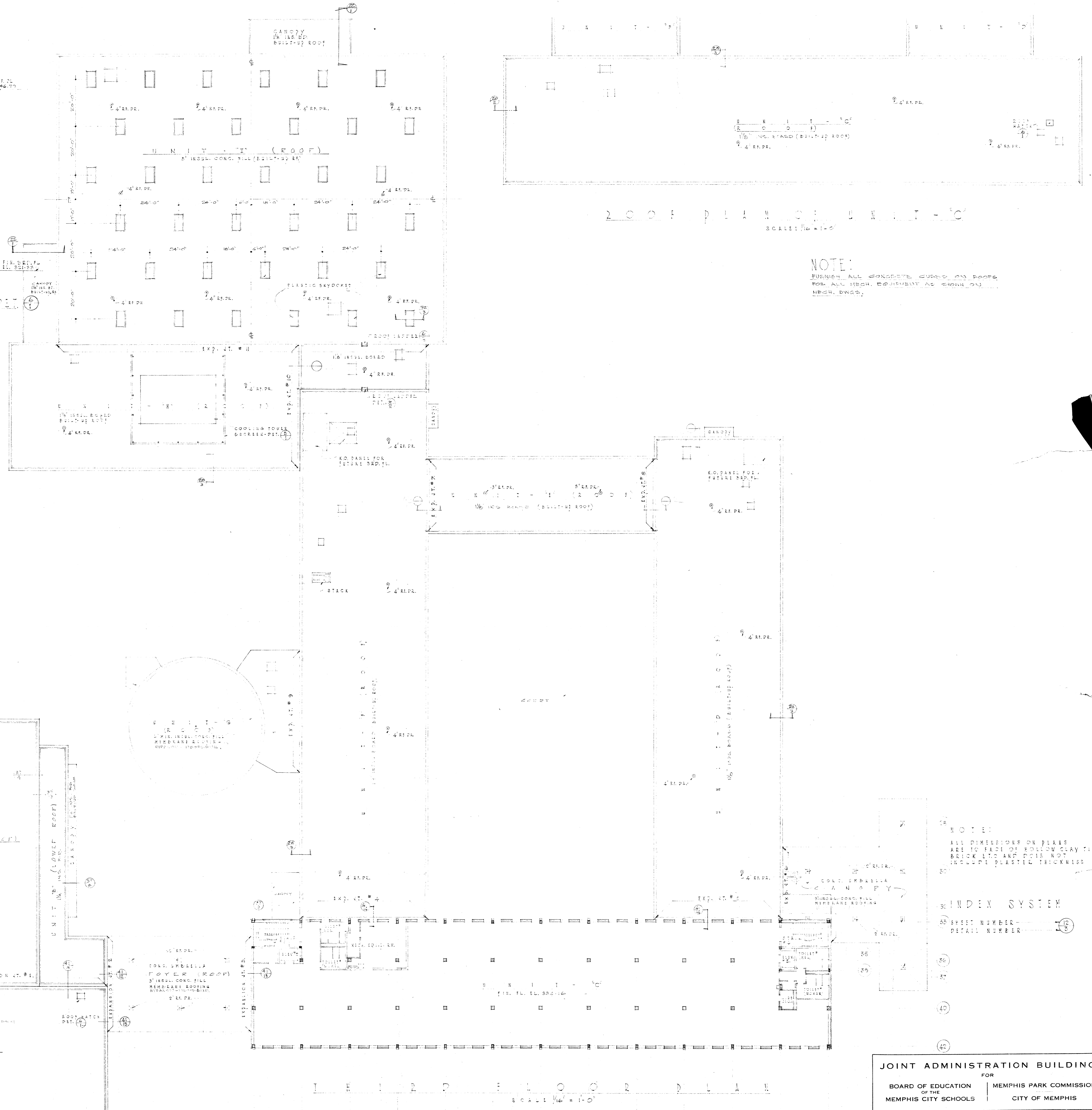
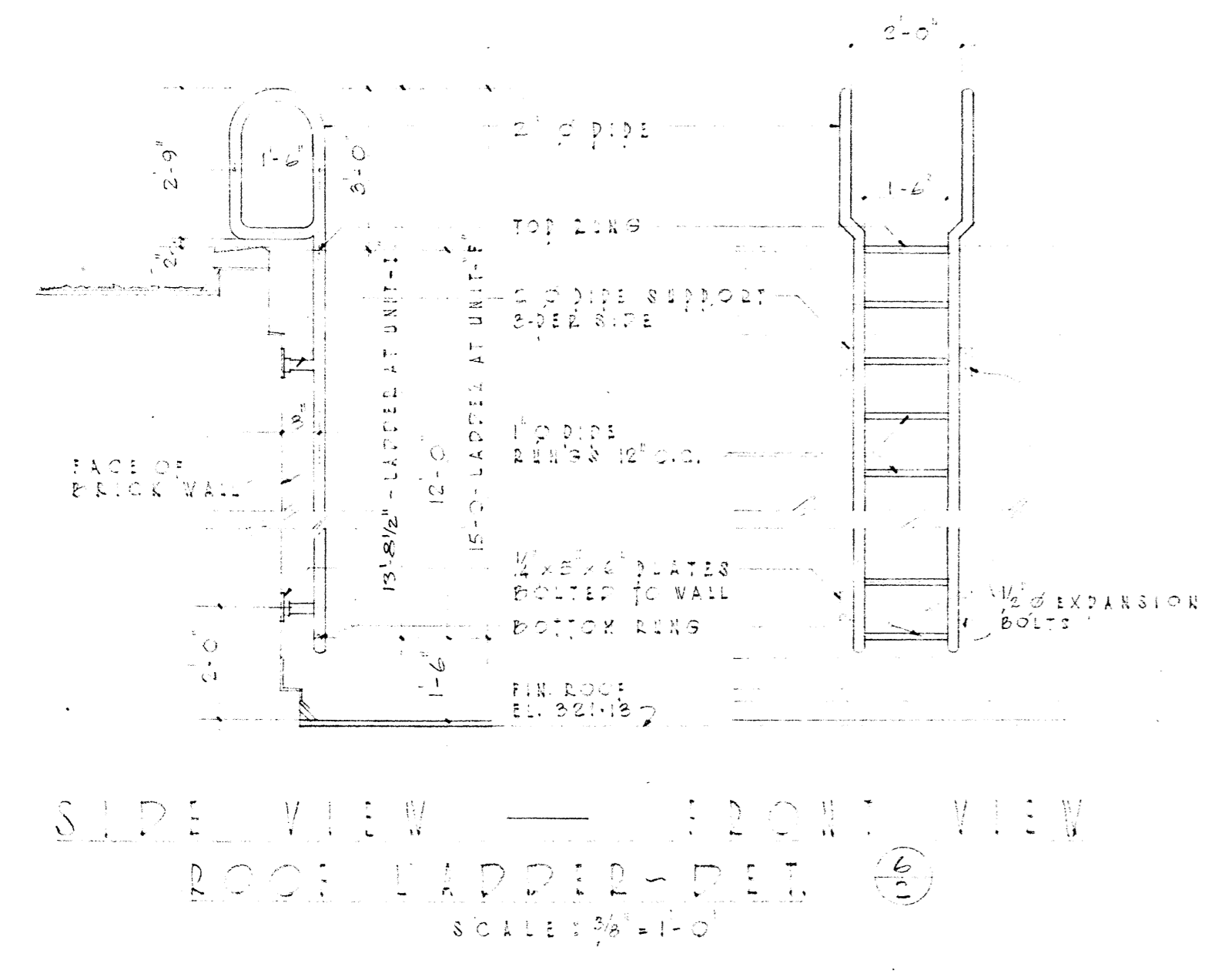
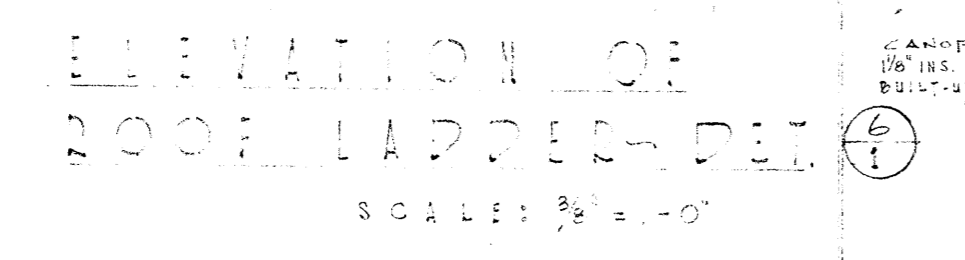
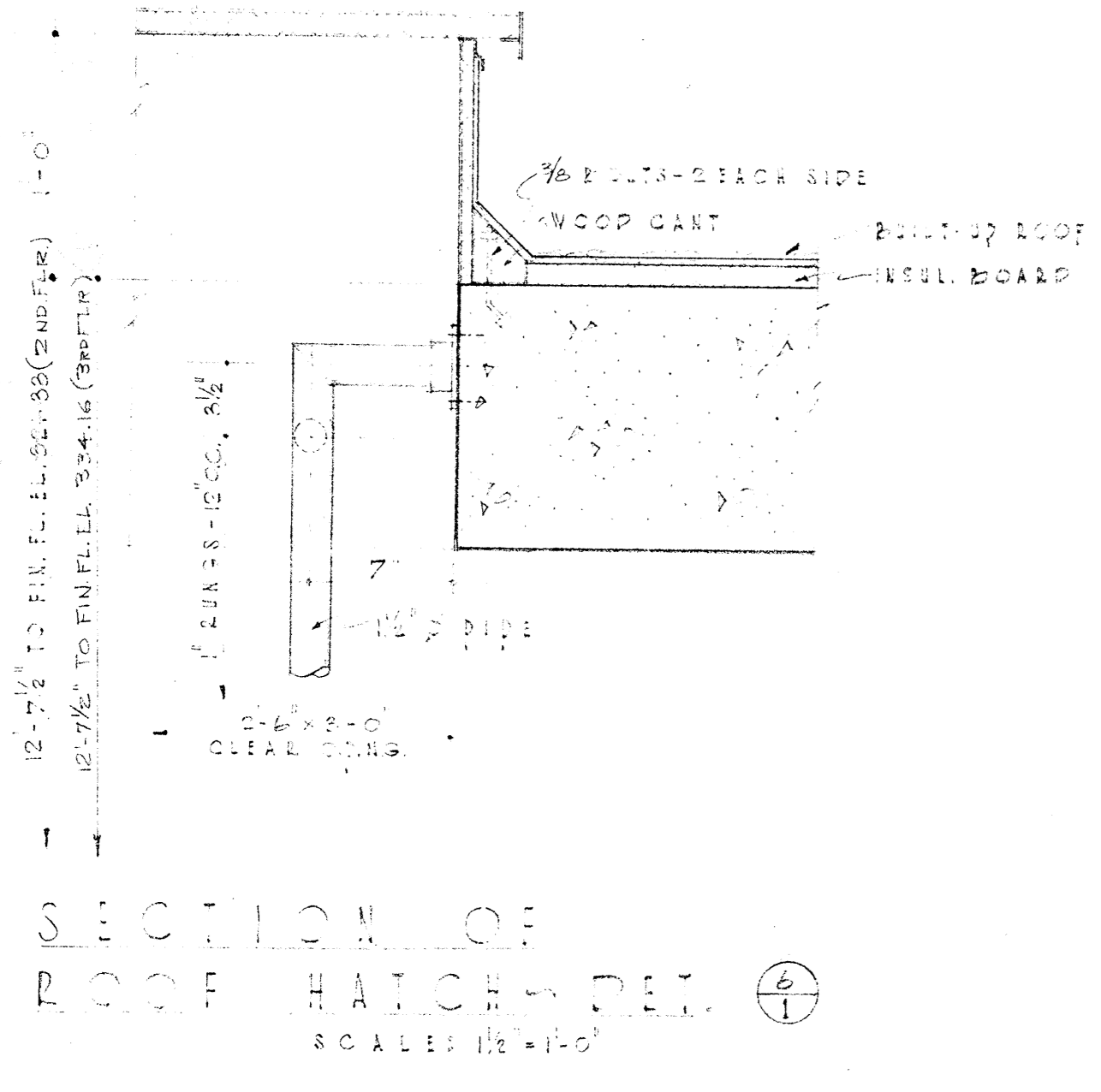
- NOTE:
ALL DIMENSIONS OF STAIRS
ARE IN FEET OF BOLD FACES
EXCEPT FOR RISERS WHICH
INCLUDE FINISH THICKNESS
- INDEX SYSTEM
SHEET NUMBER
DET. NUMBER
- LEGEND
- 36 BRICK
 - 36 HOLLOW CLAY TILE
 - 37 CONCRETE BLOCK
 - 38 METAL
 - 40 WOOD
- NOT IN CONTRACT - N.I.C.
ELEC. DRINKING F.T. - L.D.F.
FIRE EXT. CAB. - F.C.

JOINT ADMINISTRATION BUILDING
FOR
BOARD OF EDUCATION OF THE MEMPHIS CITY SCHOOLS

MEMPHIS PARK COMMISSION
CITY OF MEMPHIS

DATE: 1-30-61
APPROVED: CLARENCE H. FISHER
DEAN E. HILL AND ASSOC.
ROBERT H. McCARTY
ASSOCIATED ARCHITECTS
910 STERICK BUILDING

SHEET NO: 4 OF 52 SHEETS



NOTE:
FURNISH ALL CONCRETE CURBS ON ROOF FOR ALL HIGH EQUIPMENT AS SHOWN ON HIGH DNGS.

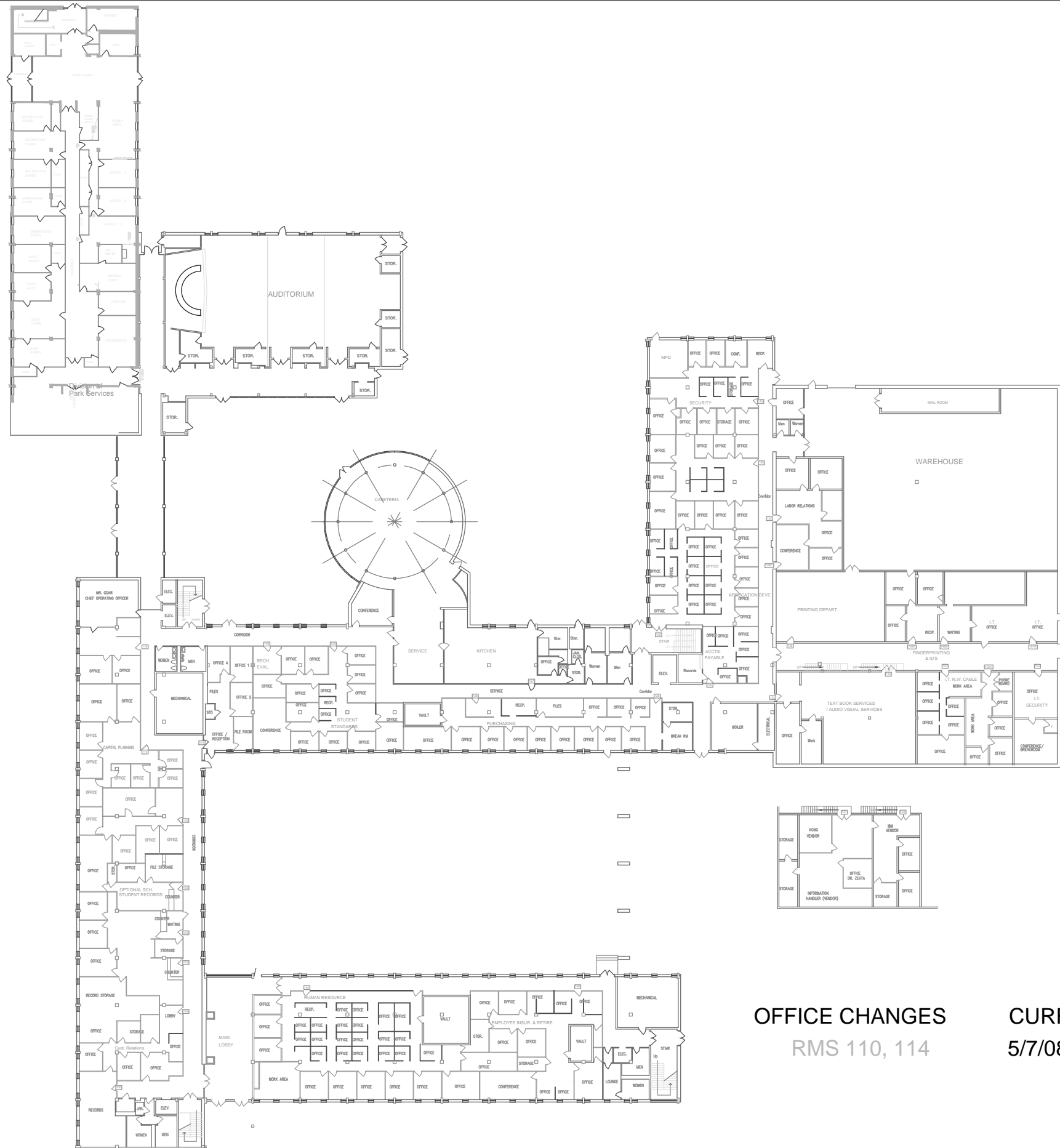
NOTE:
ALL DIMENSIONS ON PLANS ARE TO FACE OF BROWN CLAY TILE BRICK L.T.S. AND THIS NOT INCLUDE PLASTIC THICKNESS

INDEX SYSTEM
55 SHEET NUMBER — 10
DETAIL NUMBER

JOINT ADMINISTRATION BUILDING FOR BOARD OF EDUCATION OF THE MEMPHIS CITY SCHOOLS | MEMPHIS PARK COMMISSION OF THE CITY OF MEMPHIS

DATE: 1-30-61
APPROVED: CLARENCE H. FISHER, DEAN E. HILL AND ASSOC., ROBERT H. McCARTY, ASSOCIATED ARCHITECTS, 910 STERICK BUILDING
SHEET NO. 6 OF 52 SHEETS

U V AA EI HA DD CC RR SS UU VV YY



OFFICE CHANGES
RMS 110, 114

CURRENT:
5/7/08 REH

No.	DATE	REMARKS	BY
REVISIONS			
BOARD OF EDUCATION of the MEMPHIS CITY SCHOOLS			
NAME	DATE		
DRAWN BY	LRB	3/10/08	
CHECKED BY			
APPROVED BY			
APPROVED BY			
APPROVED BY			
APPROVED BY			
SCALE	SHEET	SCHOOL	DRAWING NO.
AS SHOWN	1 of 2	ADMINISTRATION BUILDING	D-155

AIR TERMINAL UNIT SCHEDULE				
DESIGNATION	F2-1	F2-2	F2-3	F2-4
AIR QUANTITY - CFM MAX/MIN	1050/0	2370/0	90/0	300/0
DESIGN INLET STATIC PRESSURE IN. W.C.	.24	.20	.20	.23
MAXIMUM STATIC PRESSURE LOSS (DAMPER WIDE OPEN)	.13	.08	.08	.12
TYPE	VAV	VAV	VAV	VAV
INLET SIZE - INCHES DIA.	12"	12"	8"	12"
TITUS	TITUS	TITUS	TITUS	TITUS
DESIGN MANUFACTURER	HONEYWELL	HONEYWELL	HONEYWELL	HONEYWELL
MODEL NUMBER	DDCV-3000	DDCV-3000	DDCV-3000	DDCV-3000
REMARKS	PROVIDE AIR TERMINAL UNITS WIRED FOR 120/1/60 VOLT SINGLE POINT CONNECTION.			

HOT WATER CONTROL VALVE SCHEDULE																
DESIGNATION	HWV1	HWV2	HWV3	HWV4	HWV5	HWV6	HWV7	HWV8	HWV9	HWV10	HWV11	HWV12	HWV13	HWV14	HWV15	HWV16
TYPE	2-WAY, N.O.	2-WAY, N.O.	2-WAY, N.O.	2-WAY, N.O.	2-WAY, N.O.	2-WAY, N.O.	2-WAY, N.O.	2-WAY, N.O.	2-WAY, N.O.	2-WAY, N.O.	2-WAY, N.O.	2-WAY, N.O.	2-WAY, N.O.	2-WAY, N.O.	2-WAY, N.O.	2-WAY, N.O.
SERVICE	HOT WATER COIL AC-1	HOT WATER COIL AC-2 & 3	HOT WATER COIL AC-4, 5 & 6	HOT WATER COIL AC-6 & 7	HOT WATER COIL AC-8	HOT WATER COIL AC-10	HOT WATER COIL AC-12	HOT WATER COIL AC-13	HOT WATER COIL AC-14	HOT WATER COIL AC-15	HOT WATER COIL AC-16	HOT WATER COIL AC-17	HOT WATER COIL AC-18	HOT WATER COIL AC-19	HOT WATER COIL AC-20	HOT WATER REHEAT COILS UNITS 6, 7 & 8
CAPACITY - GPM	28	6	33	30	47	52	27	21	22	59	12	35	3			
MINIMUM PRESSURE DROP - FT.	9.7	8.7	9.2	5.0	11.5	5.0	12.1	7.1	7.5	17.2	4.0	11.5	1.3			
MINIMUM FLOW COEFFICIENT, CV	9.0	2.0	10.9	13.4	25	12.1	13.4	7.1	7.5	17.2	4.0	11.5	1.3			
SIZE - IN.	1	1/2	1	1-1/4	1-1/2	1-1/2	1-1/4	1	1	1-1/2	1	1	1			
DESIGN MANUFACTURER	HONEYWELL	HONEYWELL	HONEYWELL	HONEYWELL	HONEYWELL	HONEYWELL	HONEYWELL	HONEYWELL	HONEYWELL	HONEYWELL	HONEYWELL	HONEYWELL	HONEYWELL	HONEYWELL	HONEYWELL	HONEYWELL
MODEL NUMBER	V501F	V501F	V501F	V501F	V501F	V501F	V501F	V501F	V501F	V501F	V501F	V501F	V501F	V501F	V501F	V501F
QUANTITY REQUIRED	1	2	3	1	1	1	1	1	1	1	1	1	1	1	1	1
REMARKS	ALL VALVES ARE MODULATING, STRAIGHT WAY AND EQUAL PERCENTAGE															

COLD WATER CONTROL VALVE SCHEDULE																
DESIGNATION	CWV1	CWV2	CWV3	CWV4	CWV5	CWV6	CWV7	CWV8	CWV9	CWV10	CWV11	CWV12	CWV13	CWV14	CWV15	CWV16
TYPE	2-WAY MODULATING N.C.	2-WAY MODULATING N.C.	2-WAY MODULATING N.C.	2-WAY MODULATING N.C.	2-WAY MODULATING N.C.	2-WAY MODULATING N.C.	2-WAY MODULATING N.C.	2-WAY MODULATING N.C.	2-WAY MODULATING N.C.	2-WAY MODULATING N.C.	2-WAY MODULATING N.C.	2-WAY MODULATING N.C.	2-WAY MODULATING N.C.	2-WAY MODULATING N.C.	2-WAY MODULATING N.C.	2-WAY MODULATING N.C.
SERVICE	CHILLED WATER COIL AC-1	CHILLED WATER COIL AC-2, 3	CHILLED WATER COIL AC-4, 5, 6	CHILLED WATER COIL AC-7	CHILLED WATER COIL AC-8	CHILLED WATER COIL AC-9	CHILLED WATER COIL AC-10	CHILLED WATER COIL AC-12	CHILLED WATER COIL AC-13	CHILLED WATER COIL AC-14	CHILLED WATER COIL AC-15	CHILLED WATER COIL AC-16	CHILLED WATER COIL AC-17	CHILLER #1 BYPASS	CHILLER #2 BYPASS	TOWER PUMP #2 BYPASS
CAPACITY - GPM	76	10	80	96	123	108	176	32	60	46	188	64	98	960	960	2060
MINIMUM PRESSURE DROP - FT.	10.4	8	10.4	13.9	20	18.5	18.5	11.5	10.4	11.7	23	13.0	16.2			
MINIMUM FLOW COEFFICIENT, CV	24	3.5	40	40	40	40	63	16	21.1	16.7	63	20.2	40			
SIZE - IN.	1-1/2	3/4	2	2	2	2	2-1/2	1-1/4	1-1/2	1-1/4	2-1/2	1-1/2	2			
DESIGN MANUFACTURER	HONEYWELL	HONEYWELL	HONEYWELL	HONEYWELL	HONEYWELL	HONEYWELL	HONEYWELL	HONEYWELL	HONEYWELL	HONEYWELL	HONEYWELL	HONEYWELL	HONEYWELL	HONEYWELL	HONEYWELL	HONEYWELL
MODEL NUMBER	V501F	V501F	V501F	V501F	V501F	V501F	V501F	V501F	V501F	V501F	V501F	V501F	V501F	V501F	V501F	V501F
QUANTITY REQUIRED	1	2	3	1	1	1	1	1	1	1	1	1	1	1	1	1
REMARKS	ALL VALVES ARE MODULATING, STRAIGHT WAY AND EQUAL PERCENTAGE															

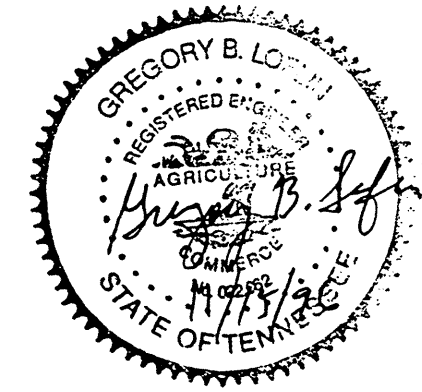
AIR TERMINAL UNIT SCHEDULE																
DESIGNATION	C2-1	C2-2	C2-3	C2-4	C2-5	C2-6	C2-7	C2-8	C2-9	C2-10	C2-11	C2-12	C2-13	C2-14	C2-15	C2-16
AIR QUANTITY - CFM MAX/MIN	1325/0	805/0	570/0	655/0	400/0	270/0	150/0	550/0	465/0	420/0	180/0	328/0	585/0	165/0	180/0	390/0
DESIGN INLET STATIC PRESSURE IN. W.C.	.26	.21	.23	.26	.17	.20	.30	.25	.19	.18	.35	.25	.23	.33	.26	.28
MAXIMUM STATIC PRESSURE LOSS (DAMPER WIDE OPEN)	.12	.09	.21	.13	.05	.08	.17	.1	.06	.05	.24	.11	.11	.20	.24	.15
TYPE	VAV	VAV	VAV	VAV	VAV	VAV	VAV	VAV	VAV	VAV	VAV	VAV	VAV	VAV	VAV	VAV
INLET SIZE - INCHES DIA.	12"	10"	14"	10"	10"	8"	10"	8"	8"	8"	8"	8"	12"	12"	8"	6"
TITUS	TITUS	TITUS	TITUS	TITUS	TITUS	TITUS	TITUS	TITUS	TITUS	TITUS	TITUS	TITUS	TITUS	TITUS	TITUS	TITUS
DESIGN MANUFACTURER	HONEYWELL	HONEYWELL	HONEYWELL	HONEYWELL	HONEYWELL	HONEYWELL	HONEYWELL	HONEYWELL	HONEYWELL	HONEYWELL	HONEYWELL	HONEYWELL	HONEYWELL	HONEYWELL	HONEYWELL	HONEYWELL
MODEL NUMBER	DDCV-3000	DDCV-3000	DDCV-3000	DDCV-3000	DDCV-3000	DDCV-3000	DDCV-3000	DDCV-3000	DDCV-3000	DDCV-3000	DDCV-3000	DDCV-3000	DDCV-3000	DDCV-3000	DDCV-3000	DDCV-3000
REMARKS	PROVIDE AIR TERMINAL UNITS WIRED FOR 120/1/60 VOLT SINGLE POINT CONNECTION.															

AIR TERMINAL UNIT SCHEDULE																				
DESIGNATION	C3-1	C3-2	C3-3	C3-4	C3-5	C3-6	C3-7	C3-8	C3-9	C3-10	C3-11	C3-12	C3-13	C3-14	C3-15	C3-16	C3-17	C3-18	C3-19	C3-20
AIR QUANTITY - CFM MAX/MIN	790/0	1045/0	1880/0	975/0	875/0	590/0	260/0	675/0	880/0	840/0	590/0	620/0	690/0	690/0	415/0	1150/0	1525/0	590/0	375/0	300/0
DESIGN INLET STATIC PRESSURE IN. W.C.	.20	.28	.24	.25	.25	.19	.28	.25	.24	.28	.26	.26	.26	.26	.21	.27	.27	.27	.22	.22
MAXIMUM STATIC PRESSURE LOSS (DAMPER WIDE OPEN)	.08	.15	.18	.13	.11	.08	.14	.1	.08	.15	.12	.15	.15	.05	.08	.15	.15	.11	.18	.10
TYPE	VAV	VAV	VAV	VAV	VAV	VAV	VAV	VAV	VAV	VAV	VAV	VAV	VAV	VAV	VAV	VAV	VAV	VAV	VAV	VAV
INLET SIZE - INCHES DIA.	10"	10"	14"	10"	10"	8"	6"	8"	10"	10"	8"	8"	8"	8"	8"	12"	12"	12"	8"	6"
TITUS	TITUS	TITUS	TITUS	TITUS	TITUS	TITUS	TITUS	TITUS	TITUS	TITUS	TITUS	TITUS	TITUS	TITUS	TITUS	TITUS	TITUS	TITUS	TITUS	TITUS
DESIGN MANUFACTURER	HONEYWELL	HONEYWELL	HONEYWELL	HONEYWELL	HONEYWELL	HONEYWELL	HONEYWELL	HONEYWELL	HONEYWELL	HONEYWELL	HONEYWELL	HONEYWELL	HONEYWELL	HONEYWELL	HONEYWELL	HONEYWELL	HONEYWELL	HONEYWELL	HONEYWELL	HONEYWELL
MODEL NUMBER	DDCV-3000	DDCV-3000	DDCV-3000	DDCV-3000	DDCV-3000	DDCV-3000	DDCV-3000	DDCV-3000	DDCV-3000	DDCV-3000	DDCV-3000	DDCV-3000	DDCV-3000	DDCV-3000	DDCV-3000	DDCV-3000	DDCV-3000	DDCV-3000	DDCV-3000	DDCV-3000
REMARKS	PROVIDE AIR TERMINAL UNITS WIRED FOR 120/1/60 VOLT SINGLE POINT CONNECTION.																			

CHILLER SCHEDULE		
DESIGNATION	CHL1	CHL2
TYPE	CENTRIFUGAL	
KW / TON - FULL LOAD, MAXIMUM	0.55	
CAPACITY - TONS	400	
REFRIGERANT	R-123	
EVAPORATOR		
GPM	960	
ENT. WATER TEMPERATURE - °F	55.0	
L.V.G. WATER TEMPERATURE - °F	45.0	
MAXIMUM PRESSURE DROP - FT	12.8	
FOULING FACTOR	0.00025	
PASSES	2	
WORKING PRESSURE - PSIG	150	
CONDENSER		
GPM	1200	
ENT. WATER TEMPERATURE - °F	85.0	
L.V.G. WATER TEMPERATURE - °F	94.2	
MAXIMUM PRESSURE DROP - FT	21.9	
FOULING FACTOR	0.00025	
PASSES	2	
WORKING PRESSURE - PSIG	150	
FLA	303	
LEA	2598	
ELECTRICAL - VOLTS/PHASE/HZ	460/3/60	
KW	220	
DESIGN MANUFACTURER	YORK - MILLENNIUM	
MODEL NUMBER	YTH344E1-CN	
REMARKS		

ADJUSTABLE FREQUENCY DRIVE SCHEDULE			
DESIGNATION	MANUFACTURER	CATALOG NO.	GENERAL FEATURES DESCRIPTION
AFD-HWP-1	ABB	ACH501-015-4-00P28FBU	15 HP RATING, 460V, NEMA 1 H-0-A SWITCH AND SPEED POT, 115V CONTROL TRANSFORMER, DISCONNECT W/5% LINE REACTOR MANUAL BYPASS/SERVICE SWITCH/MECHANICAL INTERLOCK OVERLOAD PROTECTION. SEE SPECIFICATION FOR DETAILED PERFORMANCE REQUIREMENTS.
AFD-CHP-3	ABB	ACH501-020-4-00P28FBU	20 HP RATING, 460V, NEMA 1 H-0-A SWITCH AND SPEED POT, 115V CONTROL TRANSFORMER, DISCONNECT W/5% LINE REACTOR MANUAL BYPASS/SERVICE SWITCH/MECHANICAL INTERLOCK OVERLOAD PROTECTION. SEE SPECIFICATION FOR DETAILED PERFORMANCE REQUIREMENTS.
AFD-AC-7 (2ND FLOOR, C-WING)	ABB	ACH501-020-4-00P28FBU	20 HP RATING, 460V, NEMA 1 H-0-A SWITCH AND SPEED POT, 115V CONTROL TRANSFORMER, DISCONNECT W/5% LINE REACTOR MANUAL BYPASS/SERVICE SWITCH/MECHANICAL INTERLOCK OVERLOAD PROTECTION. SEE SPECIFICATION FOR DETAILED PERFORMANCE REQUIREMENTS.
AFD-AC-8 (3RD FLOOR, C-WING)	ABB	ACH501-025-4-00P28FBU	25 HP RATING, 460V, NEMA 1 H-0-A SWITCH AND SPEED POT, 115V CONTROL TRANSFORMER, DISCONNECT W/5% LINE REACTOR MANUAL BYPASS/SERVICE SWITCH/MECHANICAL INTERLOCK OVERLOAD PROTECTION. SEE SPECIFICATION FOR DETAILED PERFORMANCE REQUIREMENTS.
AFD-AC-16 (IBM RM, AHU F-WING)	ABB	ACH501-010-4-00P28FBU	10 HP RATING, 460V, NEMA 1 H-0-A SWITCH AND SPEED POT, 115V CONTROL TRANSFORMER, DISCONNECT W/5% LINE REACTOR MANUAL BYPASS/SERVICE SWITCH/MECHANICAL INTERLOCK OVERLOAD PROTECTION. SEE SPECIFICATION FOR DETAILED PERFORMANCE REQUIREMENTS.

PUMP SCHEDULE						
DESIGNATION	CHW1	CHW2	CHW3	CHW4	CHW5	CHW6
SERVICE	CHILLED WATER PRIMARY	CHILLED WATER SECONDARY	TOWER WATER	HEATING HOT WATER		
TYPE	VERTICAL SPLIT-CASE CENTRIFUGAL	VERTICAL SPLIT-CASE CENTRIFUGAL	HORIZONTAL SPLIT-CASE CENTRIFUGAL	VERTICAL SPLIT-CASE CENTRIFUGAL		
GPM	960	960	1200	415		
TOTAL DYNAMIC HEAD - FT W.C.	25	45	65	80		
NPSH REQUIRED - FT	8	8	14	12		
FLUID TEMPERATURE - °F MAXIMUM	225	225	160	225		
MINIMUM WORKING PRESSURE - PSIG	175	175	175	175		
MAXIMUM BRAKE HP	7.9	13.9	25.0	10.7		
MINIMUM MOTOR SIZE - HP	10	20	30	15		
ELECTRICAL - VOLTAGE/PHASE/HERTZ	460/3/60	460/3/60	460/3/60	460/3/60		
MINIMUM PUMP EFFICIENCY - %	83	83	80	78		
MOTOR SPEED - RPM	1150	1150	1765	1750		
DESIGN MANUFACTURER	BELL & GOSSETT	BELL & GOSSETT	BELL & GOSSETT	BELL & GOSSETT		
MODEL NUMBER	VSC-6BXK9-3/4HL	VSC-6BXK9-3/4HL	HSC-6BXK12S	VSC-4X4X9-1/4L		
REMARKS	CHP-3 AND HWP-1 WILL UTILIZE ADJUSTABLE FREQUENCY DRIVES. SEE AFD SCHEDULE THIS SHEET.					



EQUIPMENT SCHEDULES

MEMPHIS CITY SCHOOLS - CENTRAL OFFICE HVAC RENOVATIONS

SYSTEMScorp
SYSTEMS ENGINEERING AND MANAGEMENT CORPORATION
KNOXVILLE, TENNESSEE 37921

DRAWN BY: DYL JOB NO. 96007-03 ISSUE DATE 11-18-96 SHEET NO. 11
CHECKED BY: BBD ICAID FILE NO. ME-12 PLOT DATE 11-15-96 OF ME-12